

A photograph of a man and a woman sitting on a dark wooden bench, viewed from behind. They are looking out over a large body of water towards distant mountains. The scene is framed by the branches and leaves of a tree in the foreground, with some leaves showing autumn colors. The sky is bright and clear.

**Improving lives today.
Giving hope for tomorrow.**

Annual Report
2013

 Parkinson Society British Columbia
Soci t  Parkinson Colombie-Britannique

Our Mission

Parkinson Society British Columbia exists to address the personal and social consequences of Parkinson's disease through advocacy, education, community outreach, scientific research and public awareness.

What is Parkinson's Disease?

Parkinson's disease is caused by a loss of dopamine in the brain and is the second most common chronic neurodegenerative disorder after Alzheimer's disease. Symptoms include tremor, rigidity, slowness of movement, difficulty with speech, sleep disturbance and mood disorders. There is currently no cure.

It is estimated that there are 11,000 individuals living with Parkinson's in British Columbia; 100,000 in Canada; 1 million in the US and 6.3 million worldwide. Experts predict that the incidence of Parkinson's will increase significantly as the population ages. And while the vast majority of people with Parkinson's are over 60, 20% are diagnosed before the age of 50 of which many are in their 30's and 40's.

Serving People across the Province

2013 Support Groups

- | | | |
|-------------------------------------|---------------------------------------|----------------------------------|
| > Abbotsford | > Maple Ridge/Pitt Meadows Caregivers | > Shuswap/Salmon Arm Caregivers |
| > Burnaby | > Mission | > South Sunshine Coast (Sechelt) |
| > Campbell River | > Nanaimo PWP | > Sparwood |
| > Chilliwack | > Nanaimo Caregivers | > Squamish |
| > Chinese Speaking (Vancouver) | > New Diagnosis 1 (Vancouver) | > Surrey |
| > Courtenay/Comox Valley PWP | > New Diagnosis 2 (Vancouver) | > Terrace |
| > Courtenay/Comox Valley Caregivers | > New Westminster | > Trail/Castlegar |
| > Cowichan | > North Shore | > Tri-Cities PWP |
| > Cranbrook | > Osoyoos | > Tri-Cities Caregivers |
| > Creston | > Parksville/Qualicum PWP | > Tri-Cities Men's Group |
| > Denman Island | > Parksville/Qualicum Caregivers | > Tsawwassen |
| > Fort St. John | > Penticton | > Vancouver Arbutus |
| > Kamloops | > Powell River | > Vancouver Caregivers |
| > Kelowna PWP | > Prince George | > Vancouver West Side |
| > Kelowna Caregivers | > Quadra Island | > Vernon |
| > Ladner | > Richmond | > West Vancouver Caregivers |
| > Langley PWP | > Shuswap/Salmon Arm PWP | > White Rock |
| > Langley Caregivers | | |
| > Maple Ridge/Pitt Meadows PWP | | |



Colin MacBeath
Chair

Message from Colin MacBeath, Chair

Our vision is for a better life with a brighter future for British Columbian's living with Parkinson's today and a world without Parkinson's tomorrow. Although Parkinson's is complex, our core strategies to achieve our vision were simple:

- > Advocate on behalf of people living with Parkinson's to influence relevant public policy.
- > Produce credible education materials about Parkinson's to enhance the knowledge of people living with Parkinson's, health care professionals and the general public.
- > Provide effective support services to more people living with Parkinson's to extend our reach.
- > Fund the best research projects to improve treatment and find a cure for Parkinson's.

Our people delivered:

- > We extensively promoted the *Canadian Guidelines on Parkinson's Disease* to health care professionals throughout British Columbia.
- > We produced and premiered *Undeclared. An Intimate Portrait of Parkinson's* – a documentary about 5 unshakable people living with Parkinson's, produced and distributed over 2,500 copies of *Parkinson's Disease. Understanding and Moving Forward* – a comprehensive handbook about living with Parkinson's, and hosted over 250 people at educational workshops and seminars.
- > We managed 52 support groups throughout British Columbia, responded to more than 1,700 information requests, and facilitated 18 connections through *PD Link*.
- > We funded innovative research through the Parkinson Society Canada National Research Program.

None of this would be possible without the gracious financial support of our members, donors and sponsors.

Needless to say, it has been an eventful year. But momentous. And rewarding.



We managed **52**
support groups
throughout BC



We produced
and premiered a
documentary



We funded
innovative research



Jean Blake
CEO

Message from Jean Blake, CEO

Improving lives today. Giving hope for tomorrow.

I am pleased to take this opportunity to further introduce myself to the Parkinson Society British Columbia community. My appointment as CEO began in September 2013, and I feel proud to be part of an organization that includes such a passionate group of dedicated members, supporters and staff.

I was fortunate to attend the World Parkinson Congress in Montreal where I quickly became familiar with the many faces of Parkinson's. I listened as doctors and researchers shared their latest discoveries, I watched the powerful movements of dance and yoga, and more importantly, I had the opportunity to speak with many people who are affected by the disease. I soon learned the depth of courage, resilience and hope that lies within our community. I returned home feeling inspired to lead our organization to greater heights of advocacy and support.

It is through members like you that we are able to fulfill our mission and I want to express my gratitude. You chose to partner with us to improve the quality of life for those living with Parkinson's, and we are grateful for your generosity.

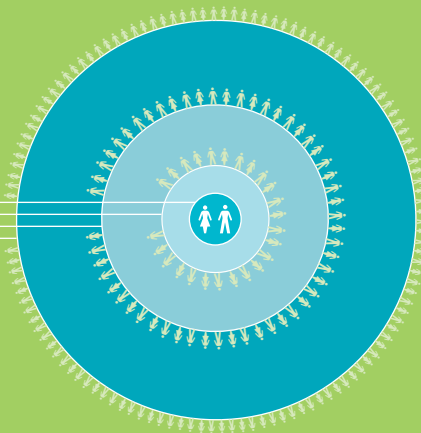
As I look ahead to 2014, we plan to continue growing our network of support and hope to build even stronger bonds within our community. At PSBC, we are lighting the path to living well with Parkinson's. I warmly invite you to join me in this next phase of our journey.

There are an estimated **11,000** individuals living with Parkinson's in British Columbia.

There are an estimated **100,000** individuals living with Parkinson's in Canada.

There are an estimated **1,000,000** individuals living with Parkinson's in the US.

There are an estimated **6.3 million** individuals living with Parkinson's worldwide.



Message from Mona Kragh, Treasurer

Our financial statements for the year ended December 31, 2013. They were audited by our external auditors who provided their qualified opinion that, based on the audit evidence they accumulated, the financial statements fairly present the Society's financial position and results in accordance with Canadian not-for-profit accounting standards.



Mona Kragh
Treasurer

The Statement of Financial Position presents healthy working capital with current assets significantly exceeding current liabilities. The Society's investment portfolio with a market value of \$1,125,219 continues to generate modest returns.

Overall, the Statement of Revenue and Expenses presents a 2013 deficit of \$306,174.

In 2013, the Board invested considerable resources of \$133,541 for the production of the documentary, *Undefeated. An Intimate Portrait of Parkinson's*. The documentary has been used to educate and build awareness for Parkinson's disease. It was launched at the 3rd World Parkinson Congress and has received international acclaim.

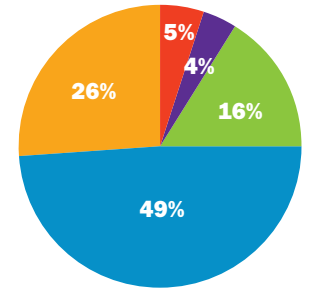
The Society enters 2014 with reserves equal to 14 months of its historical expenses which provides the Board with further opportunity. In response to increasing evidence that exercise is one of the best non-medical options to manage Parkinson's symptoms, the Board is further investing in this area for 2014.

Our Picture of Financial Accountability

To view a copy of our audited 2013 Financial Statements, please visit www.parkinson.bc.ca.

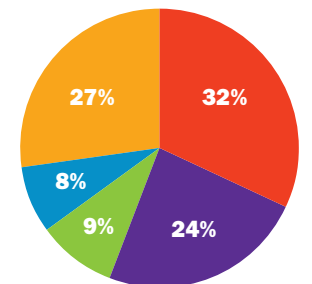
Revenue 2013

- 5%** Investment & Other Income
- 4%** Corporate Donations
- 16%** Bequests
- 49%** Special Events
- 26%** Donations & Membership



Operating Expenses 2013

- 32%** Support Services
- 24%** Administration & Governance
- 9%** Public Awareness
- 8%** Federation Support includes Research **3%**
- 27%** Fundraising

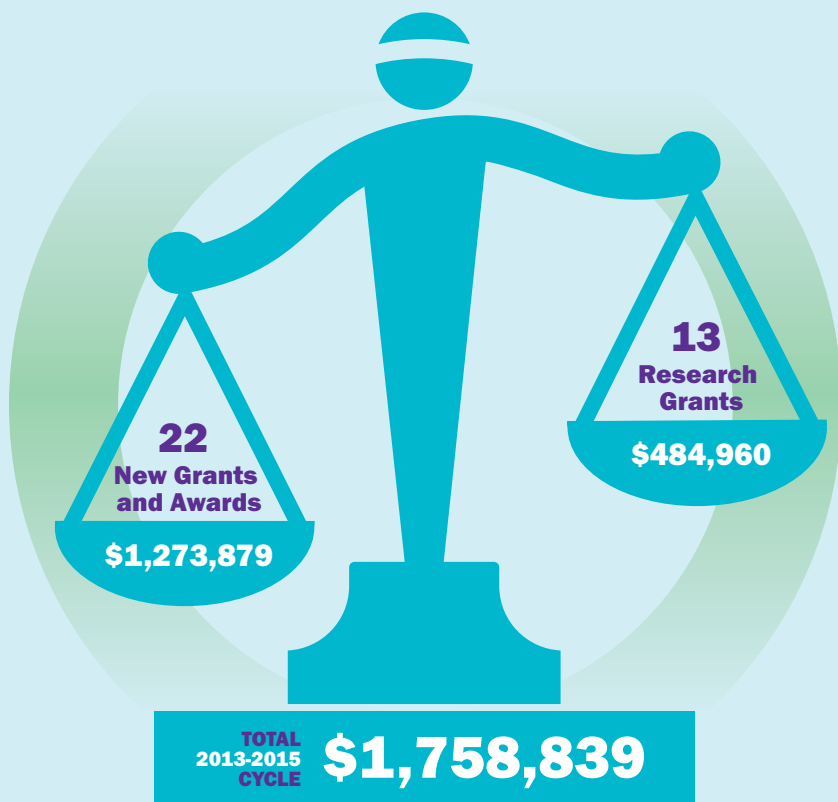


Research

Parkinson Society Canada's National Research Program funds high-quality innovative research by established and promising Canadian investigators. Together with our Regional Partners across Canada, PSBC contributes annually to the Research Program in order to support our joint mission.

The Research Program in Canada spans a variety of health disciplines such as nursing, occupational therapy, speech language pathology and social work. It also aims to build capacity among the next generation of Canadian researchers and contribute on an international scale to the collective understanding of this complex disease and to the global search for a cure.

This partnership collaboration results in increased research funding. Together we were able to fund 22 new grants and awards for the 2013-2015 cycle totaling \$1,273,879. Including the 13 research awards in their second year, our current total investment in research is \$1,758,839.



Education, Support services

2013 Highlights

In 2013, Parkinson Society British Columbia expanded its services to people living with Parkinson's as part of our mission to address the growing need for support and education.



Since January 1, 2013, PSBC staff has talked one-on-one with **1,760** individuals seeking information and referrals, managed **52** support groups and facilitated **18** connections in our *PD Link* program.

PSBC hosted two *Time Out for Caregivers* workshops attended by a total of **80** caregivers. Our bi-annual *New Diagnosis Seminar* was attended by **85** people. **7** support group visits were made to lower mainland support groups.



We participated in a Health Fair at UBC for medical students and allied health faculties. Close to **100** people took away our materials and asked questions to enhance their knowledge of Parkinson's disease.



8 in-service presentations were given in the community to audiences including residential facility staff, adult mental health nurses, graduating classes of registered massage therapists and family groups. In total, over **100** people were involved in our in-services.

PSBC developed a new 75-page handbook, *Parkinson's Disease. Understanding and Moving Forward* - a comprehensive resource for people living Parkinson's, their family and friends. To date, **2,500** copies have been distributed including orders from Parkinson Society Newfoundland and Labrador for **225** and from Parkinson Society Central and Northern Ontario for **1,050** copies.



We created **7** new help sheets, **6** of which address legal issues. The legal series was funded by a grant from the Law Foundation of British Columbia and writing was contributed by **4** talented lawyers.

Web access to our support and education materials continues to increase. Last year approximately **1,500** documents were downloaded from our website.

Fundraising

We are extremely thankful to all donors and sponsors who helped us raise \$1,024,280 in 2013. Your investment, support and dedication are vital to the continued success of our organization.

How you've helped.

We are grateful to all Champions for Parkinson's who organize their own fundraising events to benefit Parkinson Society British Columbia. The combined total of independent fundraising in 2013 was over \$37,000 including \$20,000 from Me-n-Ed's Charity Golf Classic and \$8,000 from the Cummings family who hosted an Oktoberfest event as well as an "Undefeated" movie screening night. You can be a Champion for Parkinson's too! We provide support and materials to help you raise awareness and donations. From tennis tournaments to poker nights, BBQs to bike rides, garage sales to golf tournaments - no event is too big or too small. PSBC membership grew 5% in 2013 to 1,213. We want to extend a special thank you to our members for lending their voice to advocate for better treatment options, better PharmaCare



Parkinson SuperWalk took place in 23 communities and raised \$392,000.



An Affair to Remember: An Evening in Paris raised \$115,000.

and improved healthcare in BC. More voices means greater advocacy. Please join us and become a member in 2014.

We saw a 17% increase in the number of monthly donors and are especially thankful to these loyal supporters for their ongoing commitment to helping us serve the Parkinson's community.

Many supporters plan ahead and include PSBC in their Will. In 2013, the Society received gifts totaling \$169,679 from five estates. These gifts create a legacy of hope for all those living with Parkinson's. Please add PSBC as a beneficiary in your Will.

We are proud of the important gains we made in 2013 and owe our success to the unwavering dedication of our Board members, volunteers, staff and supporters. Thank you!

Special Thanks to our Supporters

We are inspired by donors who champion our cause with their generous gifts and we are proud to acknowledge the support of our volunteers, members and donors who enable us to serve the Parkinson's community in BC. Thank you.

This report lists those who have honoured the Society with a significant gift in 2013. Due to space constraints, we are unable to list all of our donors but their support is greatly appreciated.

INDIVIDUALS

Leadership Circle \$5,000 or more

- > Anonymous
- > Sarah and Cameron Belsher
- > George and Sheri Braun
- > Henry and Velma Braun
- > Anne and Peter Kains
- > Alan G. Thompson
- > Margaret Mutch and James Patterson
- > Dr. Kenneth Muth
- > Judith and Robin Nelson
- > Breda and John Sheehan
- > Bernie and John Smerdon
- > Ken Suppes
- > Lyn Blanchard and Val Swannell
- > Dr. Jennifer L. Takahashi
- > John and Gilberte Thompson
- > Cheryl and Garry Toop
- > Christopher Vollan
- > Fern Watt
- > Derek Welbourn
- > Barry West
- > Dick Williams
- > Jennifer Williams
- > Delores Couch
- > Carol A. Devins
- > Donna Dingle
- > Victor Dyck
- > Ralph Emsland
- > Jed Falk
- > Hermann and Regine Fefer
- > Rob Feist
- > Tracy Fertig
- > Yuri Fulmer
- > Mike and Ae Ganske
- > Jane and James Gray
- > Terry and Brent Hancock
- > Sussan Harandi
- > Leanne Haywood - Farmer
- > Barbara and Shell Hershberg
- > Bernadette and Bruce Hirtle
- > Linda and Rick Hirtle
- > Gary Holland
- > Donald Hunter
- > Lucille Huot
- > Jim and Jane Hutchison
- > James Kapitza
- > Elizabeth and Henry Kornelsen
- > Dr. John Lee and Alice Ho
- > Paul Leinemann
- > June and Douglas MacGregor
- > John and Mary Manuel
- > Christine and Terry Marriott
- > Anne and Frank Mattman
- > Donald McCulloch

- > Ellen and John McCurrach
- > Janet McKeown and Dr. Martin McKeown
- > Amanda McManus
- > Dave McNeil
- > Brett B. Morgan
- > Grace Munro
- > Iris Nelson
- > Rendy and Brian Olthuis
- > Viole and Edward Parker
- > Paula Phillips and Dan Robb
- > Iris Pierrot
- > Carol Poole and Edward German
- > Beatrice Rae
- > Charlie Rawlins
- > Elizabeth Seibert
- > Richard Shantz
- > Theresa Sheehan and Terry Ellis
- > Rachel Shen
- > Barry Simpson
- > Alex and Robert Skelly
- > Deana Grinnell-Smerdon and James Smerdon
- > Keith Spencer
- > Fran and Gordon Stevens
- > Janet Stuehmer and Richard Hutton
- > Marni and Kent Stuehmer
- > Robert Swannell
- > Michael Syrcle
- > Elisabeth Thompson
- > Kan Tseung and Sau Fai Tsin
- > Jim Tyson

Benefactors Circle \$1,000 - \$4,999

- > Anonymous (4)
- > Mark Betteridge
- > Grant Burnyeat
- > Linda Dawson
- > Marjorie and Roger Eamer
- > Donna Evans
- > Frank Fallows and Family
- > Patricia Gillott
- > Gerd Grinnis
- > Cathy and Gary Harasym
- > Richard Haschke and Jacqueline Ordronneau
- > Jan and Rod Hobbs
- > Ingrid and Jurgen Kahl
- > Klaus Kahl
- > Martin Kortzman
- > Linda Leslie
- > Marna Leslie
- > Colin and Kate MacBeath
- > Jennifer and John Marriott

Tulip Circle \$500 to \$999

- > Anonymous (6)
- > Betty Adams
- > Rob Aird
- > Rob Austin
- > Marie Beale
- > Barbara Bilsland
- > Andy Bonshor
- > David Bowden
- > Gregory Bowden
- > Alix and Tam Boyar
- > Wallace Bradley
- > Robyn Brasell
- > Todd Brown
- > The Bullock Family
- > Dr. Donald Cameron
- > Margaret Carley

Special Thanks to our Supporters

- > Laura and Troy Walker
- > Tom Wallis
- > Magdalene and Peter Watts
- > Susan and Brian Woollard
- > Leslie Davidson and Lincoln Ford
- > Patricia Davies
- > Maria de Jong
- > Frank and Muriel Delikatny
- > Lila and Ray Deptuck
- > Richard Desroches
- > Louise Dillabough
- > Sandra Dillabough
- > Marie Downs
- > Warren and Sandra Downs
- > Steve Drinkwater
- > Janet E. Ellis
- > Claire and Keith Engel
- > Dr. Wendy and Dr. Terence Fidgeon
- > Garth Findlay
- > Gael and Stan Fisher
- > Robert and Muriel Foers
- > Lori and Nelson Francisco
- > Matthew Freeman
- > Kaye A. Fulmer
- > M. Glegg
- > Don Glover
- > Nadine Goodgrove
- > Robert Gray
- > Chrislana Gregory
- > Ariane and Sam Grill
- > Darlene and Arthur Grunder
- > Dermot Hallaran
- > Violet and Robert Hamilton
- > Dorothy and Phil Harrison
- > Aileen and Franz Hasenbacher
- > Barbara and Bruce Haywood-Farmer
- > Peggy Haywood-Farmer
- > Nancy Hemmings
- > Derek Henry
- > Shirley and Ron Hill
- > Fernande Hirtle
- > Paul Hollands

Hope Circle

\$250 to \$499

- > Anonymous (13)
- > Jim Allen
- > Paula Allen
- > Robert and Linda Allen
- > Bryan Aubie
- > Conni Bagnall
- > Caroline and Roy Bainbridge
- > Joanie Ball
- > Dr. Philip Barer
- > Shirley Barton
- > Maureen J. Bird
- > Jean Blake
- > Doreen and Robert Bland
- > Darren Boeur
- > Allen Booth
- > Lois and Stephen Bosch
- > Candace Boyd
- > Brenda Brown and Norman Callegaro
- > Cor Buys
- > Dr. David Carmean
- > T. R. Cauthorn
- > Margaret and Martin Chambers
- > Eva Chang
- > Felicia Chen
- > Nick and Gail Ciavarella
- > Brian Cishecki
- > Rick Clendenning
- > John B. Coalston
- > Nancy and Ken Coutts
- > Thelma Crape
- > Dr. Silke Cresswell
- > Dawn Crockett

- > Dolores I. Houghton and Cary Graham
- > E. F. and Al Humphrey
- > Jennifer Hunt
- > Hilda and William Jack
- > Penny and Russell Jennings
- > Marion Jolly
- > Patricia and Roger Jorgensen
- > Lauren Kean
- > Norman Kendall
- > William Koch
- > Ken Kennedy
- > Patricia Reid and Jeffrey Kincaid-Smith
- > Julian Kirstiuk
- > William Donaldson
- > Maureen and John Knight
- > Mona Kragh
- > Jessica Kromhoff
- > Carol Lamb
- > Eric Lamb
- > Bonnie and Brandon Lau
- > Maureen Legg
- > Beth Ann and Nick Locke
- > Shane Lowe
- > Marjorie Luce-Haddon
- > Sandra MacPherson
- > Eileen Mate
- > Joan and John Mathers
- > Peggy L. Mayes
- > April McCormack
- > Jonathan McDonald
- > William McKay
- > Jack and Angela McKeown
- > Angus McLaren
- > Cathy and Tom McNie
- > Michael Mihailoff
- > Dominique and Roger Miller
- > Maureen and Norman* Milne
- > Shelley Mintz
- > Chris and Bill More
- > Jeannie Morrison
- > Mary and Gordon Mutch
- > Kevin Newton
- > Ginette Nielsen
- > Jaon and Helge Nielsen
- > Mavis and Walter Norman
- > Nick Nuraney
- > Howard Obrand
- > Evelyn and Gerard O'Connor
- > Charlotte Osborne
- > Peter Pagnan
- > Joan and Dale Parker
- > Anne Parsons
- > Anne and Dirk Pastoor
- > Krista Pearson
- > Pat Pelton
- > Kate and Joseph Piché
- > Frances and Leonard Pietrzykowski
- > Kelly Pilon
- > Cecil Primeau
- > Wendy and George Prothero
- > Wilma and Robert Radbourne
- > Brett Ray
- > Christina Reed
- > June and John Reeve
- > Patricia Rickards
- > Joy P. Roantree
- > Amanda Rubin
- > Miriam and Allan Ruttan
- > Judy Sanderman and Dennis Wilkins
- > Parveen Sandhu
- > Ravinder and Tej Sandhu
- > Heather and Bijan Sanii
- > Bruce Schmidt
- > Roger Schreiner
- > Joel Schwartz
- > Dougal Shewan
- > Karen Shumka
- > Carolyn and David Simmons
- > Connie Spear
- > David Stalker

- > Elva Standish and Family
- > Joanna Staniszki
- > Dr. Jon Stoessl
- > Keely Stothers
- > Suzanne Stothers
- > Mary Strachan
- > Mary and John Sturgess
- > Curt Thiem
- > Jack and Mavis Toovey
- > Dr. William R. Tracey
- > Dr. Joseph K. Tsui
- > Cecilia Tupper and Abby Hakim
- > Barbara and Andrew Vogan
- > Kevin Vollan
- > Jacob Warkentin
- > Marie and Duncan Watson
- > Harald Will
- > Lesley Williams
- > Michele Williams
- > The Windley Family
- > Dorothy and Kenneth* Wishart
- > May Wong
- > Andrew Wright
- > Richie Yeung
- > Haitao Yin
- > Paul and Marguerite Zakus

CORPORATIONS, COMMUNITY AND EMPLOYEE GROUPS, FOUNDATIONS AND SERVICE CLUBS

Leadership Circle \$5,000 or more

- > Blake, Cassels & Graydon LLP
- > BMC Networks Inc.
- > Cache Ventures Inc.
- > Halo Metrics
- > NWM Private Giving Foundation - Lewis Family Fund
- > Miller Thomson LLP
- > Oyama Zipline

- > Parky Productions Inc.
- > Powell River Parkinson's Support Group
- > Scotiabank
- > Telus (Team Telus Cares)
- > TriEcon Foundation
- > Vancouver Foundation - Howard C. Green Memorial Fund

Benefactors Circle \$1,000 - \$4,999

- > Abbotsford Parkinson's Support Group
- > Beaver Valley Lions Club
- > Cocoon
- > Compassionate Care Inc.
- > Custom Plates and Profiles, a division of Samuel, Son & Co. Limited
- > Earthbank Resource System Ltd.
- > Gorman Bros. Lumber Ltd.
- > Greystone Manor Seniors Society
- > LTP Sports Group Inc.
- > MacDonald Dettwiler and Associates Ltd.
- > Magee-Seward Family Foundation
- > Paperny Entertainment Inc.
- > Provincial Employees Community Services Fund
- > RBC Foundation
- > Right of Way Operations Group
- > Royal Canadian Legion Branch No. 88
- > The Hydrecs Fund

- > The Law Foundation of British Columbia
- > Tsleil-Waututh Nation
- > Werner and Helga Hoing Foundation
- > Winteringham MacKay George Law Corporation

Tulip Circle \$500 - \$999

- > Burnaby Lougheed Lions Club
- > Cenovus Energy Inc
- > Chilliwack Parkinson's Support Group
- > Kamloops Brock Central Lions Club
- > Mark Betteridge & Associates
- > Nelson Parkinson's Support Group
- > Pratt's Compounding Pharmacy Inc.
- > Royal Canadian Legion Branch No. 164
- > Royal Canadian Legion Branch No. 179
- > Royal Canadian Legion Branch No. 8
- > Strategic Charitable Giving Foundation - Lois McElheran Foundation
- > Teekay Shipping Canada Ltd.
- > The Lighting Warehouse
- > UniPHARM & Medicine Centre Pharmacies Charitable Foundation
- > Vancouver Foundation - Naphtali Family Memorial Fund
- > Wawanesa

EVENT SPONSORS

- > A&W - Newton/ Strawberry Hill
- > AbbVie Corporation
- > AM1150
- > Black Press
- > Bond Repro
- > Canadian Western Bank
- > CISL AM650
- > Country 103 CJKC-FM
- > EZ Rock 101.5
- > Global BC
- > Pacific Blue Cross
- > Precision Injection Molding Inc.
- > Radio NL - 610AM
- > Shore 104.3FM
- > Sun FM
- > TEVA Canada Innovation
- > The Fairmont Hotel Vancouver
- > The Georgia Straight
- > The River 97.5FM

ESTATES

- > The Estate of John Morrison*
- > The Estate of Patricia Ashleigh*
- > The Estate of Hans Schenkel*
- > The Estate of Anita Lowe*
- > The Estate of Irene Mildred Stevens*

*This represents generous individuals who gave during their lifetime and are now deceased.

Note: We strive to ensure that each name is appropriately listed and spelled. Please let us know if we have made an error so we may correctly recognize you in future.

Board of Directors and Staff 2013

<i>Chair</i>	Colin MacBeath	Staff	
<i>Vice-Chairs</i>	Andrew Davenport Alexandra Rice	<i>Chief Executive Officer</i>	Jean Blake
<i>Treasurer</i>	Mona Kragh	<i>Director, Resource Development</i>	Cecilia Tupper
<i>Secretary</i>	Bob Thompson	<i>Director, Education and Support Programs</i>	Robbin Jeffereys
<i>Directors</i>	Pat Gallaher Ariane Grill Tim O'Connor Cec Primeau Tony Pugh Dave Rickards Heather Sanii Jennifer Spencer Val Swannell Joe Vukelic Sherri Zelazny	<i>Information and Programs Manager</i> <i>Resource Development Manager</i> <i>Information and Referrals Coordinator</i> <i>Marketing and Communications Manager</i> <i>Donor and Member Services Coordinator</i>	Stacey Dawes Betty Hum Courtney Hanna Laura Darch Susan Atkinson
<i>Medical Advisor</i>	A. Jon Stoessl, MD		
<i>Financial Advisor</i>	Chris Funston		



Parkinson Society British Columbia
Soci t  Parkinson Colombie-Britannique

Suite 600 - 890 West Pender Street, Vancouver, BC V6C 1J9
Telephone: 604 662 3240 | Toll Free: 1 800 668 3330 | Fax: 604 687 1327

www.parkinson.bc.ca

CHARITABLE REGISTRATION NUMBER 11880 1240 RR0001