

ADVOCACY IS EDUCATION: DEVELOPING SUPPORT FOR A PROVINCIAL PARKINSON'S STRATEGY IN BRITISH COLUMBIA



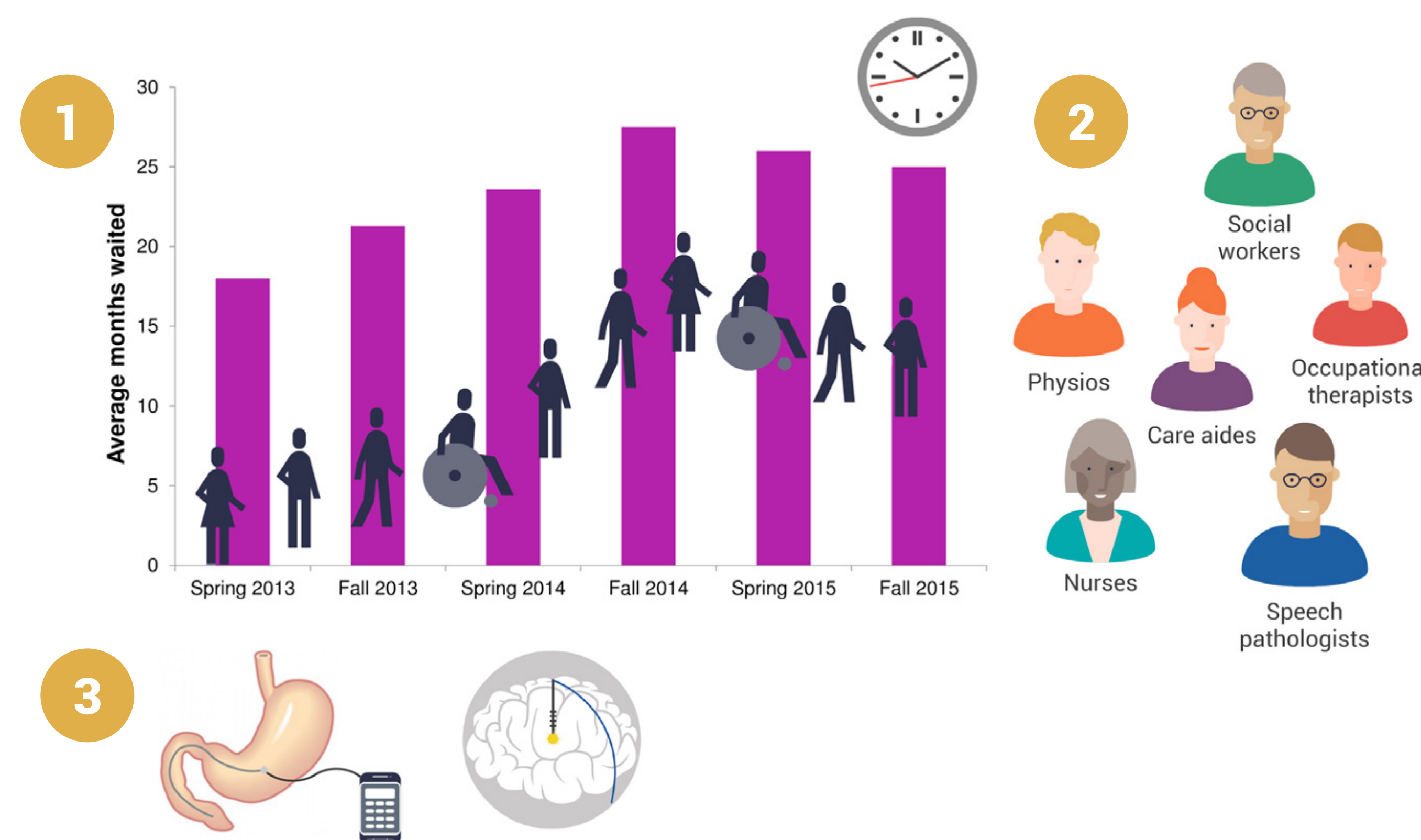
Parkinson Society British Columbia
University of British Columbia Movement Disorders Clinic



CURRENT BARRIERS TO PROPER CARE IN BRITISH COLUMBIA

- Identifying barriers to proper care is the first step in improving the management of PD.
- In BC, there are several barriers preventing many people with Parkinson's (PwP) from receiving proper care:

- Clinic **wait times** of up to 27 months to see a movement disorder specialist
- Lack of **knowledge** of PD in hospitals, clinics, and the allied health professions (AHP's) and lack of access to PD-specialized allied health professionals
- Difficulty obtaining **alternative treatments** for more advanced patients

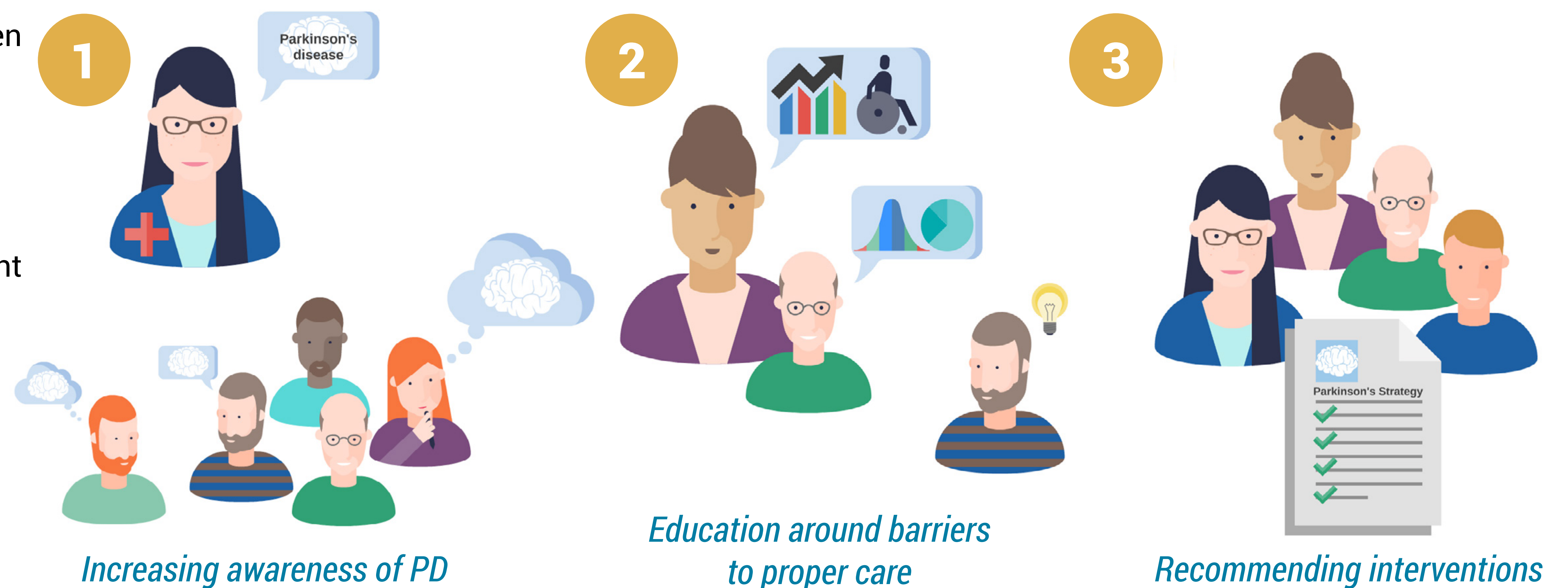


STRATEGY OBJECTIVES

- Parkinson Society BC (PSBC) is leading an initiative to establish a provincial strategy that will cross some of these barriers.
- Objective:** Creating a more integrated system to improve patient outcomes by increasing knowledge of PD in the allied health professions, and increasing access to these providers as well as movement disorder specialists.
- Proposal involves funding for a pilot project that will address these objectives and eventually form a provincial strategy.
- Pilot project will be used to evaluate the strategy.

ADVOCACY IS EDUCATION – DEVELOPING SUPPORT FOR A STRATEGY

- Development of a strategy** will be a collaboration between PSBC, movement disorder specialists from University of British Columbia, the Health Authorities in BC, and members of the Ministry of Health.
- Obtaining support** for developing a strategy involves:
 - Increasing awareness of the disease
 - Educating about the issues impacting positive patient outcomes
 - Recommending opportunities to intervene that will also minimize costs
- In order to gain political support, representatives from PSBC have gone to legislature to meet with the Minister of Health and other **political figures and their recommendations** have been crucial in moving forward.
- PwP are also playing an active role** in their advocacy by meeting with their MLA's and sharing their story.



DISCUSSION

- Identification of region-specific barriers to the proper treatment of PD is an important step in working towards large-scale improvement in PD management.
- Provincial implementation of a strategy that addresses these issues and then collaboration between a cross-section of stakeholders is a driving force behind the initiative.
- System-wide change in the management of neurodegenerative disease is not a trivial endeavor, but can be of crucial importance to ensuring those affected are receiving the care that they deserve.

FUTURE DIRECTIONS

- Continue to meet with MLAs, make connections with health authorities, and develop proposals for interventions. The following interventions are in discussion and/or proposed:
- Rapid Access to Expert Consultation (RACE)
 - A Continuing Education Program in PD-specific assessment and therapies for physiotherapists
 - A Self-management Program for PwP using the program at the Centre of Aging, University of Victoria
 - Exercise videos for PwP at various levels of fitness and disease progression

ACKNOWLEDGEMENTS

We are grateful to all of the people with Parkinson's who generously give their time to advocate for all people living with Parkinson's in British Columbia.

Parkinson Society British Columbia:
<http://www.parkinson.bc.ca>
 Tel: 604.662.3240
 Toll Free: 1.800.668.3330
You are not alone. We are here to help.